

05/11/2024

FAIRLINE PHANTOM 40 NORTH STAR

JD YACHTS.

JD Yachts
80 The Esplanade
Weymouth
Dorset
United Kingdom
DT4 7AA
Tel: +44 (0)1305 766 504
sales@jdyachts.com



FAIRLINE PHANTOM 40

NORTH STAR

GBP 189,950 INC TAX

MAIN CHARACTERISTICS

Year:	2004
Hull Colours:	White
Lying:	Eastbourne, UK
Engine(s):	2 x 370 HP Diesel Volvo TAMD 63P
Hours:	424
Length:	12.53 m / 41' 1"
Beam:	3.950 m / 12' 12"
Draft:	1.000 m / 3' 3"
Weight:	20 tons
Fuel Capacity:	996 litres / 219 gallons
Water Capacity:	450 litres / 99 gallons
Accommodation:	6 berths in 2 cabins

EXTRAS

- NEW Stern Thruster with Remote Control
- Bow Thruster
- Eberspacher Heating System
- Lewmar Anchor
- Holding Tank
- Raymarine E120 GPS/ Chartplotter to Upper & Lower Helm
- Raymarine Autopilot ST6001
- Electric Lewmar Windlass
- Flybridge Wetbar with Griddle
- Saloon Conversion to Double Berth
- Teak Laid Bathing Platform
- Teak Laid Cockpit
- Cherrywood Throughout
- Flat Screen TV to Saloon
- JVC Sound System

STANDARD SPECIFICATION

HULLFORM AND CONSTRUCTION

All gel coat and glass fibre hand laid with unidirectional, biaxial and woven rovings
Antifouling protection to hull
Deep 'V' forward; 18° deadrise aft
Designed by Bernard Olesinski and the Fairline design team
Full length moulded spray deflectors
Hull/deck join bolted and bonded
Integrally moulded engine bearers
Isophthalic gel coat backed by isophthalic resin-rich powder-bound glass mat
The deck incorporates polyurethane foam cores for high strength and excellent thermal insulation
The integral bathing platform gives the boat a longer waterline length for improved performance, particularly at reduced power settings
The propellers are set in semi-tunnels enabling the engines to be located further aft, also reducing draught and improving efficiency by reducing the shaft angle
Transverse and longitudinal strengthening stringers throughout hull

DECK

Anchor chain locker
Anchor winch controls
Anchor winch (electric)
Calibrated anchor chain
Concealed telescopic swim ladder to bathing platform
External covers to windscreen
Full set of IMCO navigation lights
Hot and cold water transom shower
Moulded non-slip deck surface
Pantograph windscreen wipers
Recessed self-draining area on foredeck for coachroof sun cushions
Riding light
Rubbing strake
Self-stowing Delta® anchor
Stainless steel bow fairlead(s)
Stainless steel bow, spring and stern cleats
Stainless steel grab rail(s) on each transom wing
Stainless steel handrails
Stainless steel pulpit
Stainless steel pushpit
Stainless steel stemhead roller
Teak-laid bathing platform
Toughened glass curved windscreen
Transom gate from cockpit to integral bathing platform
Twin horns
Water filler(s)

Windscreen washers

FLYBRIDGE AND SECOND HELM POSITION

12v heavy duty weatherproof socket

Access hatch

Adjustable bolstered helm seating

Adjustable/tilt steering wheel

Bilge pump warning lights and audible alarms

Chaise-longue seat

Companion seating to helm

Drinks holders

Echosounder and speedometer/distance log repeater(s) with sea water temperature read out

Electronic single-lever throttle and gear controls for port and starboard engines

Furniture covers

Helm position indicator

High speed magnetic compass

Instrument covers

Moulded non-slip deck surface

Remote anchor winch controls

Repeat flybridge engine instrumentation, controls and electronics

Remote control searchlight with controls at both helm stations

Stainless steel handrails

Teak-laid oversize flybridge steps

Trim tab controls

Upholstered seating area with table, convertible to cushioned sunbathing area

VHF radio telephone incorporating intercom

Wind-deflecting screen with grab rail

AFT COCKPIT/TRANSOM

12v heavy duty weatherproof socket

Access hatch to engine room and lazarette

Aft cockpit enclosure covers

Cushioned rear seating with access to stowage locker and gas locker

Cockpit lights

Engine bay access hatch with stainless steel ram

Manual bilge pump(s)

Stainless steel-framed sliding door to main saloon

Teak-laid floor throughout self-draining cockpit

Warp lockers

MAIN HELM POSITION

12v socket

Adjustable/tilt steering wheel

05/11/2024

FAIRLINE PHANTOM 40 NORTH STAR

Bilge pump switches with integral operating warning lights and audible alarms
Bolstered helm seat(s)
Chart stowage
Chart table and light
Control panel for 12v/240v domestic electrical circuits
Controls for engine bay fire extinguisher system
Echosounder and speedometer/distance log repeater(s) with sea water temperature read out
Electronic single-lever throttle and gear controls for port and starboard engines
Fuel gauges
Full engine instrumentation including; tachometers, oil pressure gauges, temperature gauges, battery condition indicators, audible alarms and engine hour meters
Helm position indicator
High speed magnetic compass
Hydraulic steering
Madrona finish instrument panel
Opening side window (manual)
Red night-light illumination to helm
Remote anchor winch controls
Searchlight controls
Switches for navigation and riding lights, windscreen wipers and engine bay extractor fans
Teak and holly floor
Trim tab controls
VHF radio telephone incorporating intercom

MAIN SALOON

Access to engine bay
Aerial and connections for television
CD/radio
Cocktail cabinet
Cocktail table converts to dining table with additional stools
Full-height standing headroom
Halogen ceiling lights
Handrail
LCD TV
Sideboard to port with optional refrigerator or icemaker
Sofa

GALLEY

Crockery stowage
Extractor fan
Foundations® work surface with covers
Halogen ceiling lights
Integrated waste bin
Lacquered cupboard doors
Recessed 2-burner gas hob, oven and grill

05/11/2024

FAIRLINE PHANTOM 40 NORTH STAR

Refrigerator/freezer with automatic 12v/240v changeover
Sink with hot and cold mixer tap
Teak and
holly floor
Underfloor stowage hold or optional freezer
Work surface lights

MASTER CABIN

Access to en suite bathroom
Bedside stowage
Drawer(s) under bed
Full-height standing headroom
Halogen ceiling lights
Large hatch with flyscreen and concealed blinds to foredeck
Mirror
Oversized double bed
Reading lights
Stainless steel opening porthole(s) with flyscreen
Upholstered bedhead
Wardrobe(s)

MASTER EN SUITE BATHROOM

220v/240v shaving point
Automatic shower tray pump-out system
Electric silent-flush freshwater toilet
Extractor fan
Foundations® or Avonite® vanity unit locker and basin with hot and cold pressurised water
Full set of bathroom fittings
Full standing height circular shower with rotating screen
Halogen ceiling lights
Mirror
Stainless steel opening porthole(s) with flyscreen

STARBOARD GUEST CABIN

Access to AC/DC distribution panel
Access to en suite bathroom
Bedside stowage
Full length berths x 2
Halogen ceiling lights
Lockers (mid-level)
Mirror
Reading lights
Stainless steel opening porthole(s) with flyscreen

Wardrobe(s)

SHOWER/WC COMPARTMENT

220v/240v shaving point

Automatic shower tray pump-out system

Electric silent-flush freshwater toilet

Extractor fan

Foundations® or Avonite® vanity unit locker and basin with hot and cold pressurised water

Full set of bathroom fittings

Full standing height circular shower with rotating screen

Mirror

Stainless steel opening porthole(s) with flyscreen

Worktop options

ELECTRICAL SYSTEMS

All 240v, 24v and 12v circuits (where applicable) protected by circuit breakers with main electrical load control panel

Electrical sockets

Heavy duty circuit breakers

Isolating switches to all batteries

12 Volt

Batteries - 2 x 165Ah wired in parallel supplying domestic services

Battery - 1 x 135Ah exclusively for port engine starting

Battery - 1 x 135Ah exclusively for starboard engine starting

240 Volt

Polarity check and earth leakage protection system

Power points throughout the boat (fed from shore power or generator)

Regulated charger 50amp

Shore power supply

ENGINES AND STERNGEAR

Access through cockpit hatch

Aerodynamically designed engine air intakes

Automatic engine bay fire extinguisher system with warnings at both helms

Automatic bilge pumps for forward bilge, engine bay and rudder bay with manual 'on' override

Balanced rudders

Cathodic protection

Dripless shaft seals

Electric engine bay fan(s)

Electro-hydraulic trim tabs with cathodic protection

Engine bay lights

Engine room soundproofing

Exhaust overheat warning system

05/11/2024

FAIRLINE PHANTOM 40 NORTH STAR

High capacity emergency manual bilge pump system with changeover valves
Manganese bronze 'P' brackets
Manganese bronze propellers contra-rotating
Sea cocks on all inlets/outlets below waterline
Stainless steel alloy shafts
Water cooled engine exhausts with silencers and side outlets

FUEL SYSTEM

Changeover valve system to permit each engine to draw fuel from, and return fuel to, either tank
Emergency fuel shut-off valves accessible via cable-operated remote control
High capacity water separators and fuel filters
Individual fillers and vents to port and starboard
Marine grade alloy fuel tanks x 2

FRESHWATER SYSTEM

Automatic, pressurised supply
Calorifier hot water system
Water tank(s)

GAS

All gas burners fitted with flame failure protection devices
Copper, polythene sheathed supply pipe
Single tail feed with regulator and gas low system test meter
Stowage for gas bottle in self-venting cockpit locker

05/11/2024

FAIRLINE PHANTOM 40 NORTH STAR

OWNER COMMENTS

Antifouled and polished August 2023 Part-exchange considered

05/11/2024

FAIRLINE PHANTOM 40 NORTH STAR



05/11/2024

FAIRLINE PHANTOM 40 NORTH STAR







05/11/2024

FAIRLINE PHANTOM 40 NORTH STAR



05/11/2024

FAIRLINE PHANTOM 40 NORTH STAR



05/11/2024

FAIRLINE PHANTOM 40 NORTH STAR



05/11/2024

FAIRLINE PHANTOM 40 NORTH STAR





05/11/2024

FAIRLINE PHANTOM 40 NORTH STAR



05/11/2024

FAIRLINE PHANTOM 40 NORTH STAR



05/11/2024

FAIRLINE PHANTOM 40 NORTH STAR



05/11/2024

FAIRLINE PHANTOM 40 NORTH STAR







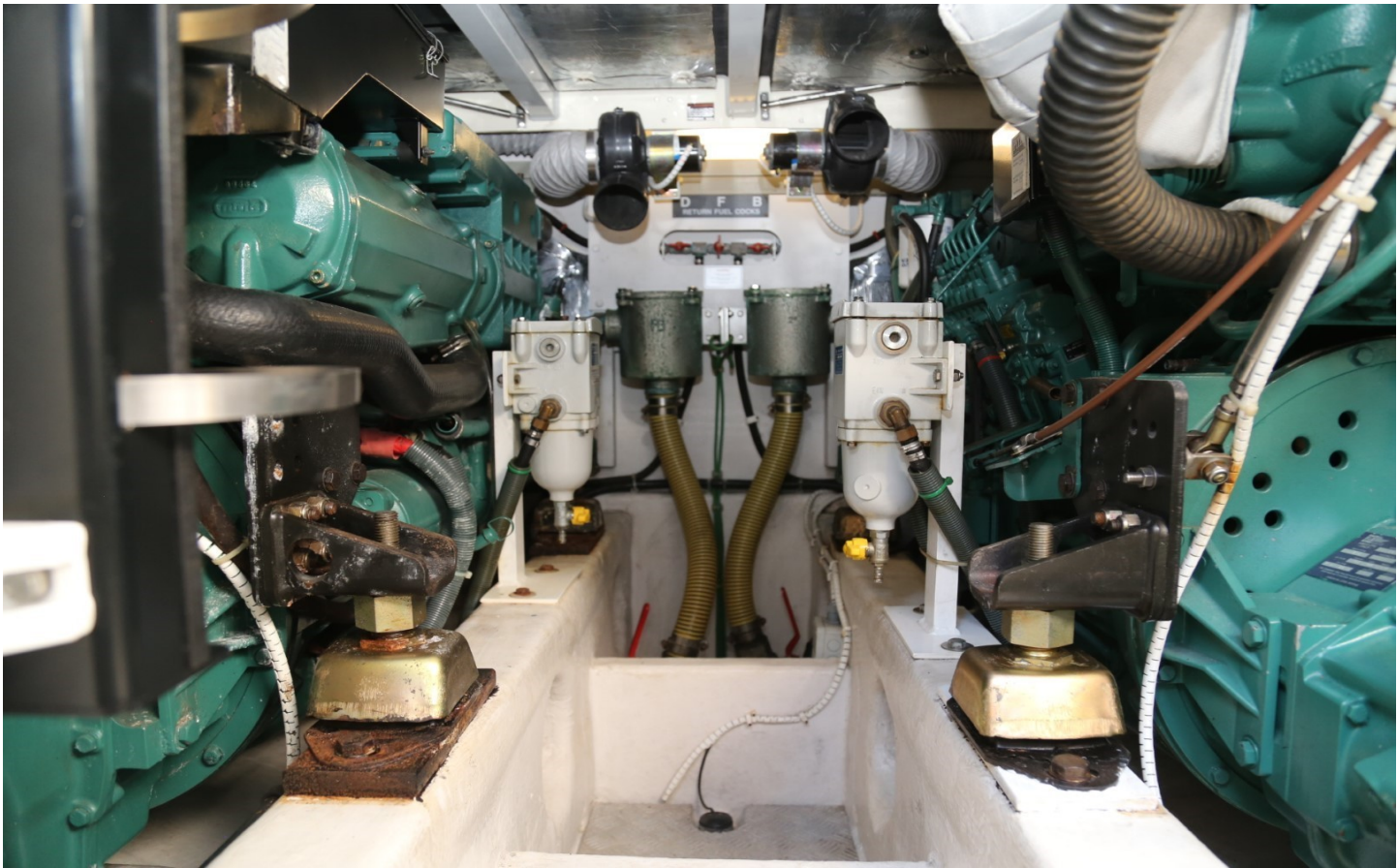
05/11/2024

FAIRLINE PHANTOM 40 NORTH STAR











DISCLAIMER

Whilst every care has been taken in the preparation of these particulars, their accuracy is not guaranteed. They are intended as guides only and as such do not constitute a part of any contract. A prospective purchaser is advised to check all particulars and where appropriate and at his own expense to employ a qualified marine surveyor to carry out a survey and/or to have an engine trial conducted, which if conducted by us shall not imply any liability on our part. All dimensions, performance figures & range notes given are approximate and should be treated as a guide only. Pictures may be from a brochure or of a similar vessel. Engine hours shown are correct at the time of preparation of the particulars, but will vary with usage. Availability of specific vessels may be subject to change, we therefore recommend you call for confirmation. N.B. Ribs, dinghies, water toys and out-board engines are not included in the sale unless other wise stated.

+44 (0) 1305 766 504

SALES@JDYACHTS.COM

© JD YACHTS 2002 - 2024. ALL RIGHTS RESERVED.