

04/03/2025

SUNSEEKER 90 OCEAN W OF JERSEY

JD YACHTS.

JD Yachts
80 The Esplanade
Weymouth
Dorset
United Kingdom
DT4 7AA
Tel: +44 (0)1305 766 504
sales@jdyachts.com



SUNSEEKER 90 OCEAN

W OF JERSEY

GBP 6,250,000 EX TAX

MAIN CHARACTERISTICS

Year:	2023
Hull Colours:	White
Lying:	Gibraltar
Engine(s):	2 x 1900 HP MAN V12
Hours:	TBC
Length:	27.10 m / 88' 11"
Beam:	7.160 m / 23' 6"
Draft:	1.860 m / 6' 1"
Weight:	87 tons
Fuel Capacity:	13000 litres / 2857 gallons
Water Capacity:	1500 litres / 330 gallons
Accommodation:	8 berths in 4 cabins

EXTRAS

- 10" touchscreen controlling the Sunseeker monitoring (flybridge helm)
- 10" touchscreen controlling the Sunseeker monitoring (main helm)
- 2 x Contardi Athena TA Desk lamps (One fitted fwd on the Port side desk as standard and one fitted aft on the stbd unit next to breakfast seating in black Nickel frame and linen shade)
- 2 x Minotti Bailly Coffee tables(1 x 92cm in diameter and 1 x 52cm diameter table with Zebrino marble tops and Malt Satin Ring in lieu of standard)
- 2 x Simrad NSO Evo3S 24" Display and OP50 keypad controller (main helm)
- 2.4M whip VHF antenna. (main helm)
- Additional Flybridge storage console bar moulding and doors sprayed in Awlgrip SE Crystal Silver metallic
- Additional under counter Custom Galley Refrigeration.
- Aft Cockpit Covers Package
- Aft cockpit privacy screen - Electrically operated
- Aft Cockpit zone audio with four Sonance 8" Speakers with Sonos Amp.
- Aft Guest Cabin Forward and Aft Upper and Lower bulkheads split with a horizontal beading of Smoked Eucalyptus in line with headboard frame
- Aft port and starboard Guest cabins - Proficient Soundbar and Sonos Amp
- Aft port and starboard Guest cabins - Samsung 55" 4K Television with Apple TV App and Airplay 2 included.
- Air Conditioning Marine Air chilled water system to Tropical specification throughout the boat
- Alternative saloon layout with extended L shaped saloon seating
- Atlas Autosshore 30KVA Shore Supply Voltage Regulator
- Beach Club platform zone audio with four Sonance 8" Speakers with Sonos Amp.
- Carbon fibre and chrome overhead shower stand with socket on the stern platform
- CCTV with 3 Cameras: 2 x Infra red located in the engine room plus 1 x camera located on the flybridge overhang facing aft
- CMC Stabilis Electra Fin stabilization system HS60 - 5kW 1.20 meter square fins.
- Compass Swinging and adjustment with correction card
- Dimmable Vimar Lighting switching on all overhead lighting.
- Dining Area - Two additional Sonance speakers with a Sonos Amp.
- Dining table with 8 chairs to port
- Domestic Safe MD 281 concealed in cabinetry to the Forward VIP Cabin
- Domestic Safe MD 363 concealed in cabinetry to the Master Stateroom
- Electric canopy
- Electric Curtains and Blinds to all Saloon and Dining area including Port side window above main stairwell
- Electric Roman blinds to all guest cabins with blackout linings
- Enclosed Galley option with inboard access door and shutter arrangement on bar
- Flybridge Covers Package
- Flybridge deck zone audio with eight Sonance 8" Speakers with Sonos Amp.
- Flybridge hardtop, including retractable centre canopy and aft extending sun canopy.
- Fore Deck Covers Package
- Fore deck sail canopy with 8 carbon fibre support poles
- Fore deck zone audio with four Sonance 6.5" Speakers with Sonos Amp.

- Forward VIP cabin - An Ultra HD Blu-ray player.
- Forward VIP cabin - Samsung 55" 4K Television with Apple TV App and Airplay 2 included.
- Forward VIP cabin - Surround sound system with Proficient Soundbar and Sonos Amp.
- Forward VIP cabin -Rear Sonance speakers with Sonos Amp and a Sonos Subwoofer.
- Fuel polishing system.
- Galley pantograph style access door to the side deck
- Helm Area - Two additional Sonance speakers with a Sonos Amp.
- Hydraulic Sleiptioner stern thruster system.
- Icemaker - Victrifrigo IM Classic Hydro in the Aft Cockpit
- Increased length of Saloon Sofa
- Interior Hard Surface upgrade to Main Deck Day Head and Dining storage
- Main deck day head in lieu of standard cloakroom
- MAN Aventics Marex OS 3D Joystick docking system with dual station controls
- Marine Electric stainless steel BBQ grill - Techimpex BBQ74 - 740mm wide on the Flybridge bar
- Marine Electric stainless steel BBQ grill with fold out workstations.
- Master Cabin - Breakfast seating arrangement on the starboard side.
- Master Stateroom - An Ultra HD Blu-ray player.
- Master Stateroom - En-suite Sonance speaker with a Sonos Amp.
- Master Stateroom - Rear Sonance speakers with Sonos Amp and a Sonos Subwoofer.
- Master Stateroom - Samsung 55" QLED 4K Television with Apple TV App and Airplay 2 included
- Master Stateroom - Surround sound system with Proficient Soundbar and Sonos Amp.
- Miele built in Nespresso coffee machine
- Octo Marine Compact Water Softener for the domestic fresh water system
- Pair of Retractable Cleats for tender on the platform.
- Panoramic sky-roof with electric blind
- Perennials exterior upholstery upgrade
- Portable oil change transfer pump.
- Retractable mood lighting (Two lights on the fore deck console table forward of the seating group)
- Richie Helmsman HF-743B Flush Mount Magnetic Compass. (main helm)
- Richie Helmsman HF-743W Flush Mount Magnetic Compass (flybridge helm)
- Saloon - Rear Sonance speakers with Sonos Amp and a Sonos Subwoofer.
- Saloon - Samsung 65" QLED 4K Television with Apple TV App and Airplay 2 included (on an electric hinge mounting) with an Ultra HD Blu-ray player.
- Saloon - Surround sound system with Proficient Soundbar and Sonos Amp
- Second shore power connection.
- Separate Miele washing machine and Miele tumble dryer in the crew mess
- Simrad Halo 6 Pulse Compression Radar 6ft 72nm. (main helm)
- Simrad 110WX Ultrasonic Wind Sensor. (main helm)
- Simrad Automatic Identification System NAIS500 Class B AIS Transponder system with dedicated VHF and GPS receiver. (main helm)
- Simrad Autopilot AP44 system (flybridge helm)
- Simrad depth Speed/Depth transducer with water temp B744V and Sonarhub. (main helm)
- Simrad GS25 GPS Antenna. Simrad Autopilot AP44 system. (main helm)
- Simrad HS100 second station VHF with DSC (flybridge helm)
- Simrad HS100 VHF with DSC. (main helm)

- Simrad structure scan 3D side scan transducers. (main helm)
- Sprung mattress for all cabin beds.
- Stainless Steel removable safety rails along the perimeter of bathing platform
- Standby fresh water pump Gianneschi Ecoinox 2CE 24Vdc self-priming pump, pressure controlled. Standby pump fitted to enable both pumps to run at the same time if required.
- Sunseeker Cm8 integrated power management 10" Glass touch display, boat monitoring and full access control repeater in the crew mess.
- Teak Decking on the Flybridge.
- Three Besenconi polished stainless steel bar stools
- Twin anchor windlass arrangement.
- Two Simrad NSO Evo3S 19" Display and OP50 keypad controller (flybridge helm)
- Two stainless steel drawer refrigerators on the Flybridge.
- Underfloor heating for en-suite floors
- Underwater lights. Lumishore TIX403 LED x 10 - Dual colour white / Blue. Four across the stern and three either side.
- Upgraded carpet throughout Guest Cabins, Stairwells and Saloon insert
- Upgraded fabrics for guest cabins
- Upgraded Generators from 29 to 35kW.
- Wetbar raised shelf bar top with LED lights
- Wine Cooler for 34 bottles - Miele KWT6321UG
- Wood flooring in Saloon, dining and forward observation and helm with insert carpet for saloon seating group.
- X-Tend sun-lounger - the platform forward locker doors to fold out electrically exposing two large sun-loungers
- Zycoo U50 Hybrid IP PBX telephone exchange system including: Yealink W52P Dect Phone for the Main Saloon, Master Stateroom, Forward VIP cabin, Starboard Guest cabin, Port Guest cabin, the helm station and the Crew Mess.

STANDARD SPECIFICATION

MANUFACTURER DESCRIPTION

The 90 Ocean breaks new boundaries and creates a spectacular yacht that boasts a remarkable 20% increase in overall volume and nearly 30% more deck space, thanks not only to her substantial beam but also her upright bow that brings interior volume forward.

The spacious Beach Club measuring over 6m x 4m is perfect for family and friends to socialise close to the water, perhaps utilising the built-in BBQ. The Bezenzoni 'Ladder Gangway' allows guests to effortlessly access the watersports on offer, after which they will be keen to use the oversized 'rain shower' before relaxing on the new transformational X-TEND™ sunbeds.

The adjoining hydraulic platform provides ample space to house and launch a Jet Ski, a Williams 460 SportJet and two SeaBobs, housed in dedicated self-draining lockers.

The flybridge is a staggering 25% larger than a comparable yacht, and owners can select an infinity spa pool and sideboard with a second integrated BBQ. A wet bar with stainless steel sink, drawer fridges, ice maker, and glass bar top is also available to make the most of this popular entertainment area.

The carbon fibre hardtop with a full-width retractable canopy provides the shade for exceptionally generous seating and dining area that can be configured or left open-plan depending on the owner's exact requirements.

Its unique main deck, penthouse-style saloon and luxurious staterooms offer a new-found design direction and materials selection providing elegant interiors.

The interior finish combines traditional elegance with contemporary updates. The layering of textural elements and the mix of furnishings and fabrics feels timeless with a modern twist that exudes sleek simplicity and sophistication.

The generous saloon measures a remarkable 8.8m in length by 5.6m in width, providing space for sumptuous modular lounge seating and chaise longue to port. Floor-to-ceiling windows flood the living accommodation with natural daylight complemented by sliding doors to port if required.

A dedicated dining area for eight can be positioned to port or starboard whilst a contemporary apartment-style galley forward, with partition screens, offers plentiful space and direct side deck access for crew.

LAYOUT/ INTERIOR

The door of the garage has been set on an angle to not only allow for the design of the sunbeds but to also increase the remarkable storage capacity on-board with 56 cubic feet of space immediately behind the sunbeds plus two lockers offering yet another 90 cubic feet of adaptable racked or open space.

The adjoining deck area with large hydraulic platform provides the space to house and launch a Jet

04/03/2025

SUNSEEKER 90 OCEAN W OF JERSEY

Ski, a 15' Williams 460 SportJet and two SeaBobs.

The flybridge is a staggering 25% larger than a comparable yacht and owners can select an infinity spa pool and sideboard with second integrated BBQ.

A wet bar with stainless steel sink, drawer fridges, ice maker and glass bar top is also available to make the most of this popular entertaining area.

Its unique main deck, penthouse style saloon, measuring a remarkable 8.8m in length by 5.6m width and luxurious staterooms offer a new found design direction and materials selection providing elegant interiors to enchant any owner.

The interior finish combines traditional elegance with contemporary updates.

The layering of textural elements and the mix of furnishings and fabrics feels timeless with a modern twist that oozes sleek simplicity and sophistication.

04/03/2025

SUNSEEKER 90 OCEAN W OF JERSEY



04/03/2025

SUNSEEKER 90 OCEAN W OF JERSEY



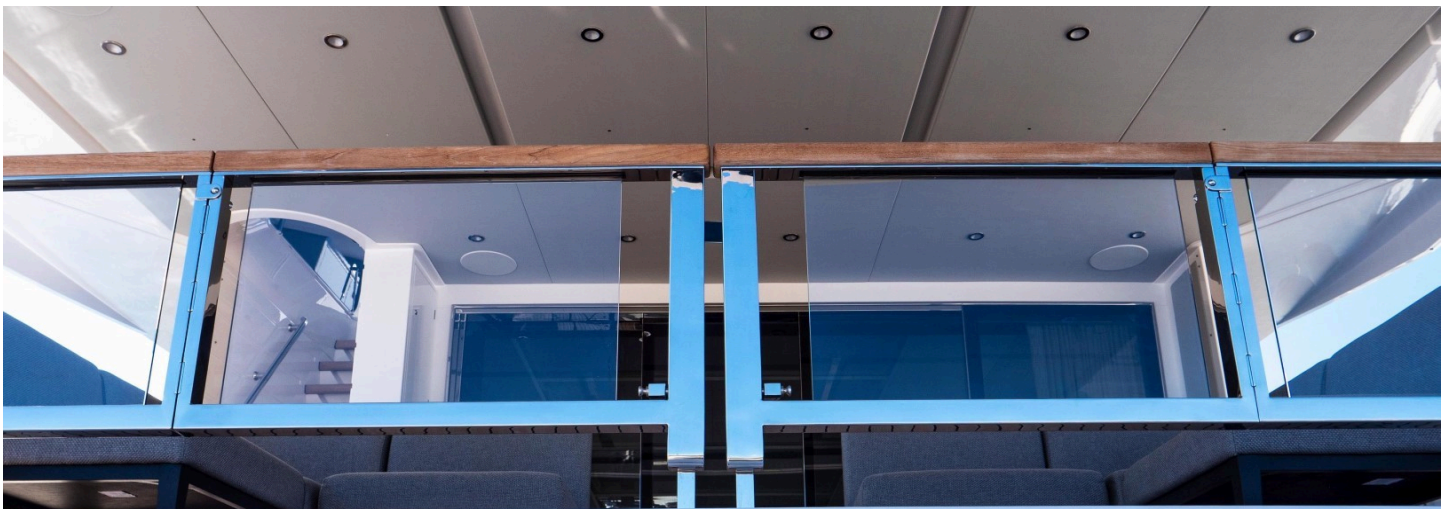
04/03/2025

SUNSEEKER 90 OCEAN W OF JERSEY



04/03/2025

SUNSEEKER 90 OCEAN W OF JERSEY



W
OF JERSEY

04/03/2025

SUNSEEKER 90 OCEAN W OF JERSEY



04/03/2025

SUNSEEKER 90 OCEAN W OF JERSEY



04/03/2025

SUNSEEKER 90 OCEAN W OF JERSEY



04/03/2025

SUNSEEKER 90 OCEAN W OF JERSEY



04/03/2025

SUNSEEKER 90 OCEAN W OF JERSEY



04/03/2025

SUNSEEKER 90 OCEAN W OF JERSEY



04/03/2025

SUNSEEKER 90 OCEAN W OF JERSEY



04/03/2025

SUNSEEKER 90 OCEAN W OF JERSEY



04/03/2025

SUNSEEKER 90 OCEAN W OF JERSEY



04/03/2025

SUNSEEKER 90 OCEAN W OF JERSEY



04/03/2025

SUNSEEKER 90 OCEAN W OF JERSEY



04/03/2025

SUNSEEKER 90 OCEAN W OF JERSEY



04/03/2025

SUNSEEKER 90 OCEAN W OF JERSEY



04/03/2025

SUNSEEKER 90 OCEAN W OF JERSEY



04/03/2025

SUNSEEKER 90 OCEAN W OF JERSEY



04/03/2025

SUNSEEKER 90 OCEAN W OF JERSEY



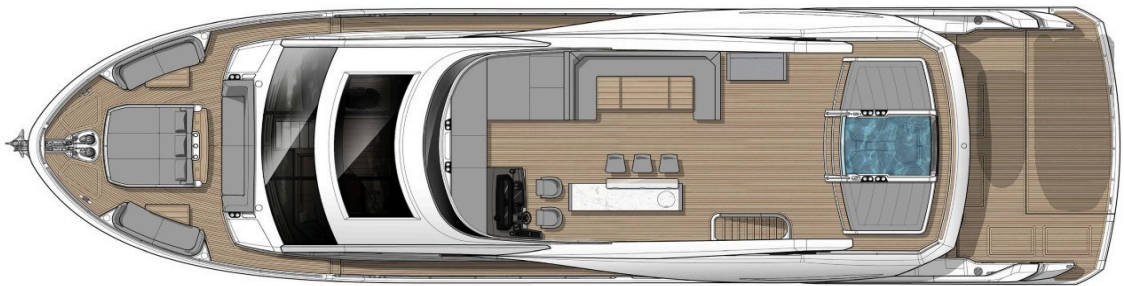
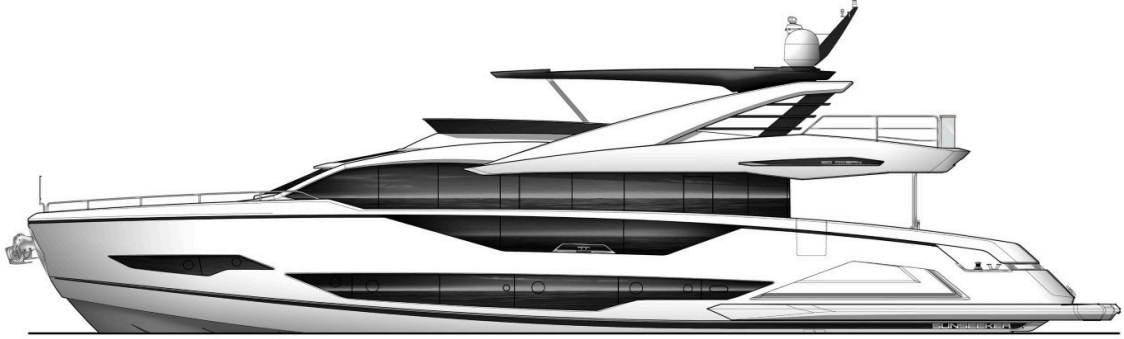
04/03/2025

SUNSEEKER 90 OCEAN W OF JERSEY



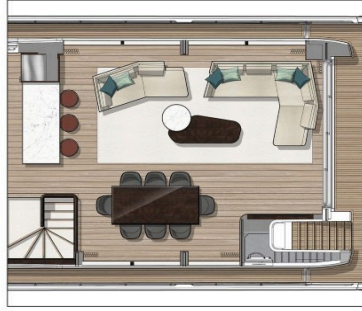
04/03/2025

SUNSEEKER 90 OCEAN W OF JERSEY



04/03/2025

SUNSEEKER 90 OCEAN W OF JERSEY



DISCLAIMER

Whilst every care has been taken in the preparation of these particulars, their accuracy is not guaranteed. They are intended as guides only and as such do not constitute a part of any contract. A prospective purchaser is advised to check all particulars and where appropriate and at his own expense to employ a qualified marine surveyor to carry out a survey and/or to have an engine trial conducted, which if conducted by us shall not imply any liability on our part. All dimensions, performance figures & range notes given are approximate and should be treated as a guide only. Pictures may be from a brochure or of a similar vessel. Engine hours shown are correct at the time of preparation of the particulars, but will vary with usage. Availability of specific vessels may be subject to change, we therefore recommend you call for confirmation. N.B. Ribs, dinghies, water toys and out-board engines are not included in the sale unless otherwise stated.

+44 (0) 1305 766 504

SALES@JDYACHTS.COM

© JD YACHTS 2002 - 2025. ALL RIGHTS RESERVED.

 **YACHTS.**

A YACHT BROKERAGE WITH A DIFFERENCE

FOLLOW US

