

11/21/2024

PRINCESS 42 POLYPUS

JD YACHTS.

JD Yachts
80 The Esplanade
Weymouth
Dorset
United Kingdom
DT4 7AA
Tel: +44 (0)1305 766 504
sales@jdyachts.com



PRINCESS 42

POLYPUS

GBP 229,950 INC TAX

MAIN CHARACTERISTICS

Year:	2004
Hull Colours:	White
Lying:	Weymouth, UK
Engine(s):	2 x 430 HP Diesel Volvo TAMD 74L EDC
Hours:	842
Length:	13.48 m / 44' 3"
Beam:	4.140 m / 13' 7"
Draft:	1.090 m / 3' 7"
Weight:	16 tons
Fuel Capacity:	1362 litres / 299 gallons
Water Capacity:	455 litres / 100 gallons
Accommodation:	6 berths in 2 cabins

EXTRAS

- NEW Exterior Cockpit & Flybridge Upholstery trimmed in Silvertex (Colour Titanium with Navy Blue Inserts Embossed with Princess Emblem) (2022)
- NEW Raymarine Axiom 9" Touchscreen MFD to Upper Helm (2022)
- Furuno Navnet GPS/Radar Chartplotter to Lower Helm
- Furuno Open Array Radar
- Side Power Bow Thruster with Joystick Controls to both Helms
- Side Power Stern Thruster with Joystick Controls to both Helms
- Fischer Panda 4Kva Generator
- Eberspacher Heating
- NEW Step Lighting to Flybridge (2023)
- NEW Underwater Lights (2023)
- NEW Cockpit Canopy (2023)
- Raymarine ST60 Depth Log to Lower Helm
- Raymarine ST60 Speed Log to Lower Helm
- Raymarine ST60 Tridata Log to Upper Helm
- Raymarine ST6000+ Autopilot to both Helms
- Holding Tank
- NEW Samsung Microwave (2020)
- NEW Flybridge Covers (2020)
- NEW 4G Router (2021)
- NEW Illuminated Boat Name Aft (2021)
- NEW Hitachi Smart TV to Saloon (2021)
- NEW USB Port and iPad Brackets to Saloon (2022)
- Saloon Sofa to Berth Conversion
- Teak Laid Cockpit
- Teak Laid Bathing Platform
- Teak Laid Steps to Sidedecks
- NEW (2022) 2 x Engine Batteries and 4 x Domestic Batteries

STANDARD SPECIFICATION

DECK FITTINGS

Teak-laid transom platform, cockpit deck, flybridge stairway and stairs to side decks
Reversible electric anchor winch with foredeck, main helm and flybridge controls
Self-stowing 16kg Delta anchor with 30 meters of chain
Stemhead roller with automatic anchor launch and retrieve
Deck hatch access to chain locker
Stainless steel bow, stern and spring cleats
Bow and stern fairleads
Stainless steel pulpit and guard rails
Stainless steel coachroof and flybridge handrails
Foredeck hatch
Stainless steel rubbing band with rubber insert
Full set of IMCO navigation lights
Riding light
Dual station remote control searchlight
Twin electric horns
Fuel and water fillers

AFT COCKPIT

Self-draining
Upholstered seat with fender and life raft stowage space below
Cockpit lighting
Cockpit cover
Stainless steel handrails
Gas strut assisted hatch to lazarette stowage area
Lockable access hatch to engine room
Overboard vented, self-draining locker for 2 gas bottles
Transom door leading to integral bathing platform
Reserve manual bilge pump and controls
Remote fuel cocks located in locker
Full-length transom bathing platform with foldaway swimming ladder, hot and cold shower, teak decking, storage compartment and dinghy storage removable chock system
220/240v shore support inlet and cable stowage locker

FLYBRIDGE

Dual station instrument controls (see Lower Helm Position)
Double helm seat with fore and aft adjustment
U-shaped upholstered sofa with drinks table
Double sunbed with cushions
Loudspeakers linked to saloon stereo CD/radio
Integral stairway from aft cockpit with access hatch

Wind deflector screens
Stainless steel handrails
GRP radar arch
Console and seat covers
Matched whip aerials for VHF R/T and radio
Refrigerated top loading cool box
Bilge pump audible alarm

LOWER HELM POSITION

Twin helm seats with fore and aft adjustment for helmsman
Twin windscreen wipers with blade-mounted freshwater screen wash system
Burr elm instrument console with engine instruments and fuel gauges

DUAL STATION INSTRUMENTS AND CONTROLS AT FLYBRIDGE AND LOWER HELM POSITION

Rudder position indicator
Electronic engine controls
Visual and audible engine warning system
Hydraulic steering
Electric anchor winch remote control
Trim tab controls with indicators
VHF with DSC R/T with intercom to flybridge
Speed and distance log
Echo sounder with alarm
Remote control searchlight
High speed magnetic compass
Horn button
Bilge pump controls with visual 'pump running' warnings
24v and 220/240v electrical control panels
PVC sunscreens
Riding light, helm and navigation light control switches
12v outlet
Chart table with light and chart stowage
Sliding tinted side window adjacent to helmsman
Stowage under helm seat

DECK SALOON

U-shaped sofa with dining table to starboard (converts to double berth)
Moveable 2-seater sofa
Stereo CD/radio with saloon and exterior speakers
Sideboard units with glass, bottle and general stowage and space for optional refrigerator
Curtains, venetian blinds or sunscreens to all windows and doors
Tinted opening side windows

Overhead lighting
Triple stainless steel framed sliding doors to cockpit
Clock with barometer

GALLEY

Avonite worktop
Recessed 3-zone gas hob with flame-failure protection and cover
Extractor fan
Combination microwave/ conventional oven with grill
Twin-bowl stainless steel sink with mixer tap
24v/240v fridge/freezer
Overhead lighting
Dedicated crockery and cutlery stowage
General storage cupboards
Sliding tinted window

OWNER&RSQUO;S CABIN AND EN-SUITE

Large double bed with drawers below
Large wardrobe
Forward mirror
Dressing table with mirror
Cupboard with shelves
Overhead lighting and individual berth lights
Deck hatch with flyscreen and blind
Washbasin with mixer tap
Separate shower area with automatic pump-out
Extractor fan
WC roll holder
Glass holder
Soap dish in shower
Towel ring
Mirror
Storage locker

GUEST CABIN

Two full-size single berths
Wardrobe with shelf space
Storage lockers
Overhead lighting and individual berth lights

GUEST/ DAY HEAD

Washbasin with mixer tap
Shower area with automatic pump-out
Extractor fan
WC roll holder
Glass holder
Soap dish in shower
Towel ring
Mirror
Storage lockers
Separate access to passageway

POWER AND DRIVE SYSTEMS

4-bladed propellers in nickel aluminium bronze
Engine room lighting
Hydraulic steering system
Lockable access hatch and ladder from cockpit to engine room
Trim tabs with indicators Electronic engine and gear shift controls
Engine room extractor fan with electronic time delay
2 x heavy-duty batteries for engine starting
4 x heavy-duty auxiliary batteries
Battery link facility with remote control at helm position
Both battery banks are charged using a voltage sensitive relay that parallels both battery banks when a charging source is present
60-amp 24v float battery charger
Remote battery master switches with control switch at main switch panel
Circuit breakers on all circuits
24v to 12v voltage dropper on certain navigation and radio circuits
220/240 Volt:
Shore support inlet in cockpit locker with storage for cable
Polarity check system
Earth leakage safety trip
Circuit breakers on all circuits
Power points (240v) in:
Owner's suite
Guest suite
Galley
Saloon
Shaver points in both bathrooms

FUEL SYSTEM

Fuel fillers on port and starboard side decks
High-capacity fuel filters/water traps
Remote fuel cock controls in cockpit locker
Fuel gauges at lower helm position

WATER SYSTEM

Water heated by engine and 240v immersion heater

Automatic water pump with filter

Main circuit breaker at switch panel

Water level gauge

Deck filler

BILGE PUMPS

Automatic electric bilge pumps (with manual override) in:

Engine room

Forward accommodation

Aft lazarette (4 in all)

High-capacity manual bilge pump with valve system and suction points in the same areas

11/21/2024

PRINCESS 42 POLYPUS

OWNER COMMENTS

Tender and outboard available under separate negotiation. Refurbished and replacement SIMRAD VHF handsets (2023) Replacement flush and rinse pumps (2023) Carbon filter replacement (2023)

11/21/2024

PRINCESS 42 POLYPUS



11/21/2024

PRINCESS 42 POLYPUS



11/21/2024

PRINCESS 42 POLYPUS



11/21/2024

PRINCESS 42 POLYPUS



11/21/2024

PRINCESS 42 POLYPUS



11/21/2024

PRINCESS 42 POLYPUS



11/21/2024

PRINCESS 42 POLYPUS



11/21/2024

PRINCESS 42 POLYPUS



11/21/2024

PRINCESS 42 POLYPUS







11/21/2024

PRINCESS 42 POLYPUS



11/21/2024

PRINCESS 42 POLYPUS



11/21/2024

PRINCESS 42 POLYPUS



11/21/2024

PRINCESS 42 POLYPUS



11/21/2024

PRINCESS 42 POLYPUS





11/21/2024

PRINCESS 42 POLYPUS



11/21/2024

PRINCESS 42 POLYPUS



11/21/2024

PRINCESS 42 POLYPUS



11/21/2024

PRINCESS 42 POLYPUS



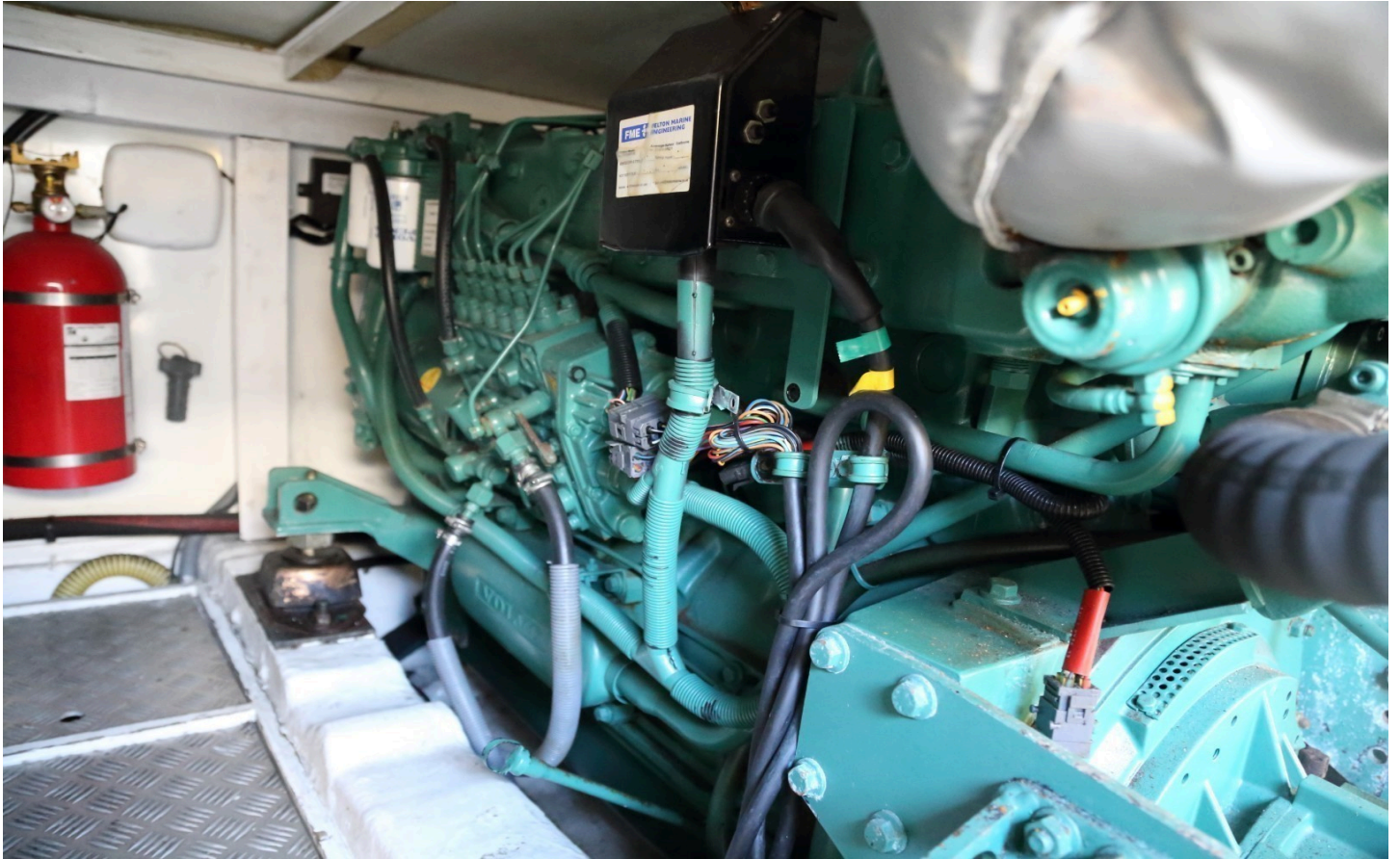
11/21/2024

PRINCESS 42 POLYPUS



11/21/2024

PRINCESS 42 POLYPUS



DISCLAIMER

Whilst every care has been taken in the preparation of these particulars, their accuracy is not guaranteed. They are intended as guides only and as such do not constitute a part of any contract. A prospective purchaser is advised to check all particulars and where appropriate and at his own expense to employ a qualified marine surveyor to carry out a survey and/or to have an engine trial conducted, which if conducted by us shall not imply any liability on our part. All dimensions, performance figures & range notes given are approximate and should be treated as a guide only. Pictures may be from a brochure or of a similar vessel. Engine hours shown are correct at the time of preparation of the particulars, but will vary with usage. Availability of specific vessels may be subject to change, we therefore recommend you call for confirmation. N.B. Ribs, dinghies, water toys and out-board engines are not included in the sale unless other wise stated.

+44 (0) 1305 766 504

SALES@JDYACHTS.COM

© JD YACHTS 2002 - 2024. ALL RIGHTS RESERVED.