

03/31/2025

PRINCESS V48 BLACK PEARL

**JD YACHTS.**

JD Yachts  
80 The Esplanade  
Weymouth  
Dorset  
United Kingdom  
DT4 7AA  
Tel: +44 (0)1305 766 504  
sales@jdyachts.com



**PRINCESS V48**

**BLACK PEARL**

GBP 484,950 INC TAX

**MAIN CHARACTERISTICS**

Year:	2015
Hull Colours:	Dark Blue
Lying:	Portland, UK
Engine(s):	2 x 435 HP Diesel Volvo IPS 600
Hours:	352
Length:	15.58 m / 51' 1"
Beam:	4.110 m / 13' 6"
Draft:	1.140 m / 3' 9"
Weight:	16 tons
Fuel Capacity:	1325 litres / 291 gallons
Water Capacity:	364 litres / 80 gallons
Accommodation:	6 berths in 2 cabins

**EXTRAS**

- Cruisair Reverse Cycle Air-Conditioning Throughout
- Upgraded ONAN 11Kw Generator (233.6 hours - July 2023)
- Hi-Lo Bathing Platform
- Volvo Penta Joystick Control
- Side-Power Bow Thruster (with remote control)
- Stern Facing Camera
- Remote Control for Lewmar Anchor Winch
- Additional 10m of 10mm Anchor Chain (total 50m)
- Cockpit Sun Awning with complete Full Height Cockpit Cover
- Raymarine HybridTouch 15.4" Colour Multifunction Display
- Raymarine Autopilot
- Fish Finder
- AIS
- Teak Laid Bathing Platform
- Teak Laid Cockpit
- Teak Laid Side Decks
- Saloon - 28" LED TV with Fusion MS-AV700iMet
- Owners Stateroom - 28" LED TV with a Fusion MS-AV700i Radio/DVD/MP3 stereo with Bluetooth facility
- Forward Guest Cabin - 22" LED TV with Fusion MS-AV700i Radio/iPod/MP3 with Bluetooth facility
- Radio/DVD/MP3 stereo with Bluetooth facility
- Underwater Lights
- Dimmer Switch for Deck Saloon lighting
- Dimmer Switch for Lower Dinette lighting
- Dishwasher in Galley (drawer type-6 place setting)
- Lower Dinette to convert to double berth
- Mosquito screens for all opening portholes
- Cockpit Wetbar with Griddle
- Additional Fridge to Saloon
- Rovere Oak Interior Wood Gloss finish
- Saloon, Galley and Helm floors are Walnut
- Scissor berths in Forward Cabin in place of double berth
- Sunroof blinds
- 3 x Triangle cushions for back rests for sunbathers
- Windscreen Cover
- Bar heater in engine room
- 6 x Princess Cups
- 6 x Princess Sorcers
- 6 x Princess Plates (medium size)
- 6 x Princess Plates (large size)
- 6 x Princess Bowls

## **STANDARD SPECIFICATION**

### **STANDARD EQUIPMENT**

Power-assisted steering system  
Volvo joystick manoeuvring control  
24v DC/240v AC electrical system  
240v shore power with 40-amp float battery charger  
Remote control electric anchor winch  
Electro-hydraulic trim tabs  
VHF with DSC R/T  
Speed and distance log  
Echo sounder with alarm  
Remote control searchlight  
Combination microwave/conventional oven/grill  
Refrigerator with deep freeze compartment  
Electric quietflush toilets  
Saloon and cockpit stereo CD/radio  
Teak-laid transom platform/cockpit deck/stairs to side decks

### **DECK FITTINGS**

Reversible electric anchor winch with foredeck and helm position controls  
Self-stowing 20kg/44lb Delta anchor with 40m chain  
Stemhead roller with automatic anchor launch and retrieve  
Stainless-steel bow, stern and spring cleats  
Stainless-steel pulpit and guard rails  
Stainless-steel coachroof handrails  
Foredeck hatch with integrated skylight  
PVC rubbing band with stainless-steel insert  
Full set of IMCO navigation lights  
Riding light  
Remote control searchlight  
Twin electric horns  
Fuel and water fillers

### **COCKPIT**

Self-draining  
U-shaped seating/dining area  
Teak table  
Overhead and low level courtesy lights  
Tonneau cover  
Stainless-steel grabrails  
Transom hatch to stern lazarette  
Access hatch to engine room  
220/240v shore support inlet in locker  
Life raft locker

Transom platform with integrated swimming ladder (with optional electro-hydraulic raise/lower mechanism)

Twin transom doors

Hot and cold shower

Storage lockers

## **HELM POSITION**

Helm seat with sit/stand facility

Full engine instrumentation

Fuel gauges

Single-lever engine controls

Joystick maneuvering control

Rudder position indicator

Power-assisted steering system and adjustable steering wheel

Remote control anchor winch

Trim tab controls with indicators

VHF with DSC R/T

Speed and distance log

Echo sounder with alarm

Remote control searchlight

High speed compass

Horn button

Chart area

Twin windscreen wipers

Windscreen freshwater pressure wash

Bilge pump controls with visual 'pump running' indicator (3)

## **UPPER SALOON**

U-shaped sofa

Dining table

Cocktail cabinet

Refrigerator

Overhead downlighters

Electric opening roof

Triple stainless-steel framed sliding doors to cockpit

Radio/CD/MP3 with saloon and cockpit speakers

Timber-laid flooring

## **LOWER SALOON**

L-shaped sofa

Table

Storage lockers

Overhead downlighters

Main electrical control panel with battery isolation switches

Opening portlights (2)

**GALLEY**

Avonite (or similar) worktop  
3 ring electric hob  
Stainless-steel sink with Monobloc mixer tap  
Combination microwave/conventional oven with grill  
Full size refrigerator with separate freezer  
Waste bin  
Storage cupboards, drawers and lockers  
Timber-laid flooring  
Under floor storage bin  
Opening portlights

**OWNERS STATEROOM**

Large double bed with drawers below  
Wardrobe with shelves  
Drawers and storage lockers  
Overhead and individual berth lights  
Sofa  
Dressing table  
Panoramic trapezoidal windows in toughened glass with opening ports  
En-suite bathroom:  
Avonite worktop  
Wash basin with Monobloc mixer tap  
Separate stall shower with extractor  
Mirror  
Storage locker  
Opening portlight

**FORWARD GUEST CABIN**

Scissor Berths with drawers below  
Wardrobe  
Deck hatch with integrated fly screen and blind  
Storage lockers  
Downlighters and individual berth lights  
Trapezoidal side windows with opening ports  
En-suite bathroom:  
Wash basin with Monobloc mixer tap  
Separate stall shower with extractor  
Mirror  
Storage locker  
Opening portlight

**POWER AND DRIVE SYSTEMS**

Power-assisted steering  
Electronic engine controls

Joystick manoeuvring system  
Volvo active corrosion protection system  
Engine room extractor fans with electronic time delay  
Trim tabs with indicators  
Engine room lighting

## **ELECTRICAL SYSTEMS**

24 Volt:

4 x heavy-duty batteries for engine starting  
4 x heavy-duty auxiliary batteries  
Engine alternators charge via split charge relays to isolate engine start batteries from auxiliaries  
40-amp 24v float battery charger  
Battery paralleling system (for engine start back-up)  
Remote battery master switches with control switch at main panel  
Circuit breakers on all circuits

220/240 Volt:

Shore support inlet (32A)  
Power points in owner's stateroom, forward guest cabin, galley (double), lower and upper saloon  
Polarity check system  
Earth leakage safety trip  
Shaver points in both bathrooms

## **FUEL SYSTEM**

Twin fuel tanks (in NS8 marine grade alloy) with interconnection system  
Fuel fillers on both side decks  
High-capacity fuel filter/water trap  
Remote fuel cocks in cockpit locker  
Fuel gauges on helm console

## **WATER SYSTEM**

Water heated by engine and 240v immersion heater  
Automatic water pump with filter  
Main circuit breaker at switch panel  
Water level gauge  
Deck filler

## **FIRE EXTINGUISHERS**

Automatic fire extinguisher in engine room and generator space

## **BILGE PUMPS**

Automatic electric bilge pumps with manual override (3 in all)  
High-capacity manual bilge pump with valve system and suction points in engine room and accommodation space

03/31/2025

PRINCESS V48 BLACK PEARL

## **OWNER COMMENTS**

Williams 285 Tender available under separate negotiation with chocks, straps and cover.



03/31/2025

PRINCESS V48 BLACK PEARL



03/31/2025

PRINCESS V48 BLACK PEARL



03/31/2025

PRINCESS V48 BLACK PEARL



03/31/2025

PRINCESS V48 BLACK PEARL



03/31/2025

PRINCESS V48 BLACK PEARL



03/31/2025

PRINCESS V48 BLACK PEARL



03/31/2025

PRINCESS V48 BLACK PEARL



03/31/2025

PRINCESS V48 BLACK PEARL





03/31/2025

PRINCESS V48 BLACK PEARL



03/31/2025

PRINCESS V48 BLACK PEARL



03/31/2025

PRINCESS V48 BLACK PEARL



03/31/2025

PRINCESS V48 BLACK PEARL



03/31/2025

PRINCESS V48 BLACK PEARL



03/31/2025

PRINCESS V48 BLACK PEARL



03/31/2025

PRINCESS V48 BLACK PEARL



03/31/2025

PRINCESS V48 BLACK PEARL





03/31/2025

PRINCESS V48 BLACK PEARL



03/31/2025

PRINCESS V48 BLACK PEARL



03/31/2025

PRINCESS V48 BLACK PEARL



03/31/2025

PRINCESS V48 BLACK PEARL



03/31/2025

PRINCESS V48 BLACK PEARL



03/31/2025

PRINCESS V48 BLACK PEARL



03/31/2025

PRINCESS V48 BLACK PEARL



03/31/2025

PRINCESS V48 BLACK PEARL





03/31/2025

PRINCESS V48 BLACK PEARL



03/31/2025

PRINCESS V48 BLACK PEARL



03/31/2025

PRINCESS V48 BLACK PEARL



03/31/2025

PRINCESS V48 BLACK PEARL



03/31/2025

PRINCESS V48 BLACK PEARL



03/31/2025

PRINCESS V48 BLACK PEARL



03/31/2025

PRINCESS V48 BLACK PEARL



03/31/2025

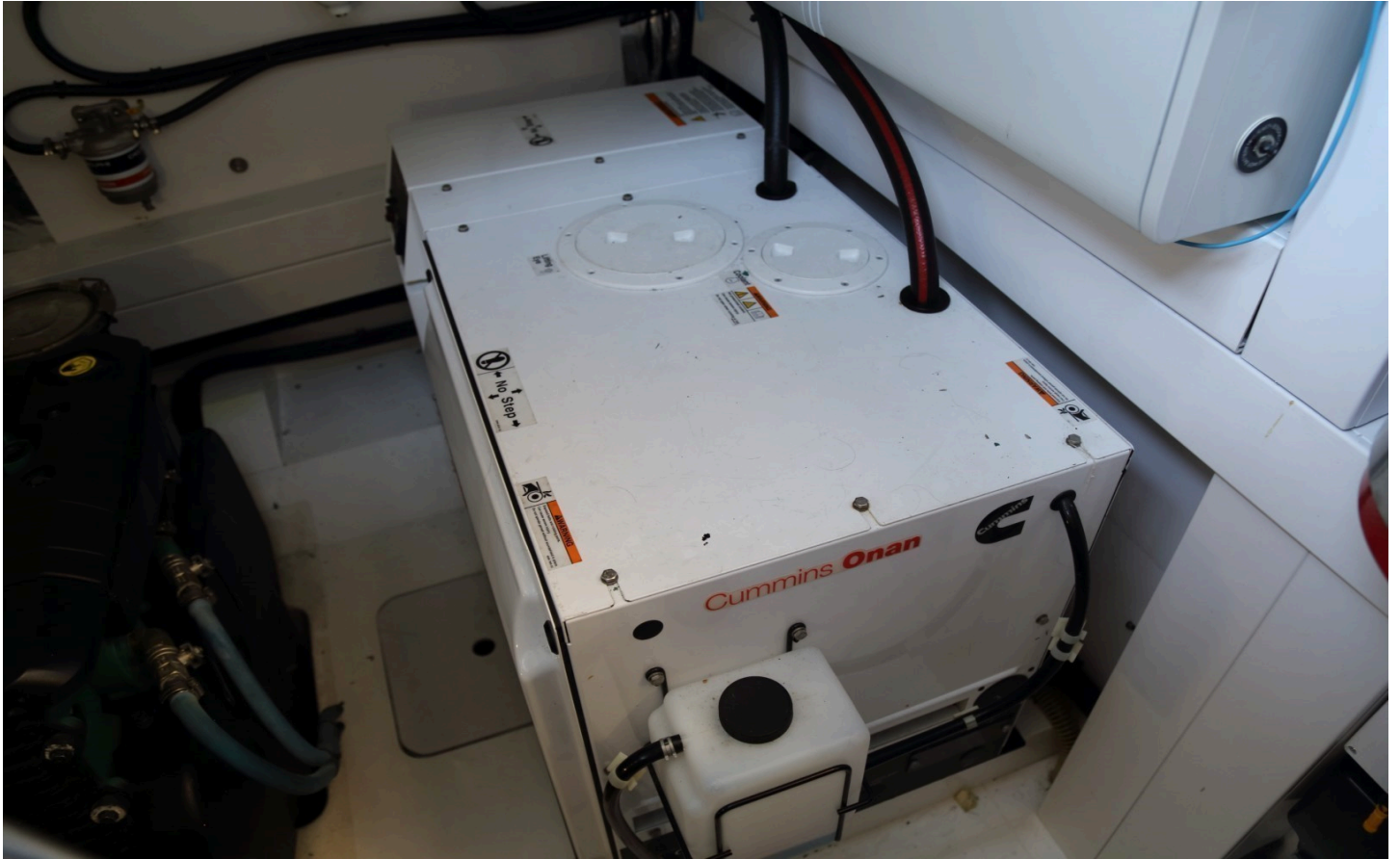
PRINCESS V48 BLACK PEARL





03/31/2025

PRINCESS V48 BLACK PEARL



03/31/2025

PRINCESS V48 BLACK PEARL



## DISCLAIMER

Whilst every care has been taken in the preparation of these particulars, their accuracy is not guaranteed. They are intended as guides only and as such do not constitute a part of any contract. A prospective purchaser is advised to check all particulars and where appropriate and at his own expense to employ a qualified marine surveyor to carry out a survey and/or to have an engine trial conducted, which if conducted by us shall not imply any liability on our part. All dimensions, performance figures & range notes given are approximate and should be treated as a guide only. Pictures may be from a brochure or of a similar vessel. Engine hours shown are correct at the time of preparation of the particulars, but will vary with usage. Availability of specific vessels may be subject to change, we therefore recommend you call for confirmation. N.B. Ribs, dinghies, water toys and out-board engines are not included in the sale unless otherwise stated.

+44 (0) 1305 766 504

SALES@JDYACHTS.COM

© JD YACHTS 2002 - 2025. ALL RIGHTS RESERVED.

 **YACHTS.**

A YACHT BROKERAGE WITH A DIFFERENCE

FOLLOW US

